



SUNLAX

VIVE EN EL PARAÍSO

PUNTA CANA
DOMINICAN REPUBLIC



VISTACANA

A WORLD OF MOMENTS

KNOW



SUNLAX

VIVE EN EL PARAÍSO

SUNLAX at Vista Cana is a project of modern villas located in a privileged enclave in Vista Cana, one of the most exclusive and rapidly growing areas in the region. The strategic location offers easy access to local attractions and the stunning beaches in the area.

This development is distinguished by promoting a harmonious community, where the tranquility and well-being of residents are a priority. The villas are designed with spacious and functional spaces that encourage social interaction and modern lifestyle. Additionally, elements of sustainability and cutting-edge technology are incorporated to ensure an eco-friendly and comfortable environment for its inhabitants.

Investing in Sunlax offers a unique opportunity to enjoy a luxurious lifestyle in an incomparable natural setting. The combination of its strategic location, harmonious community, and modern design make it an attractive investment for both those seeking a permanent home and those looking for a vacation property with investment return potential.

ARTIFICIAL BEACH



CLUBHOUSE



RESTAURANTS



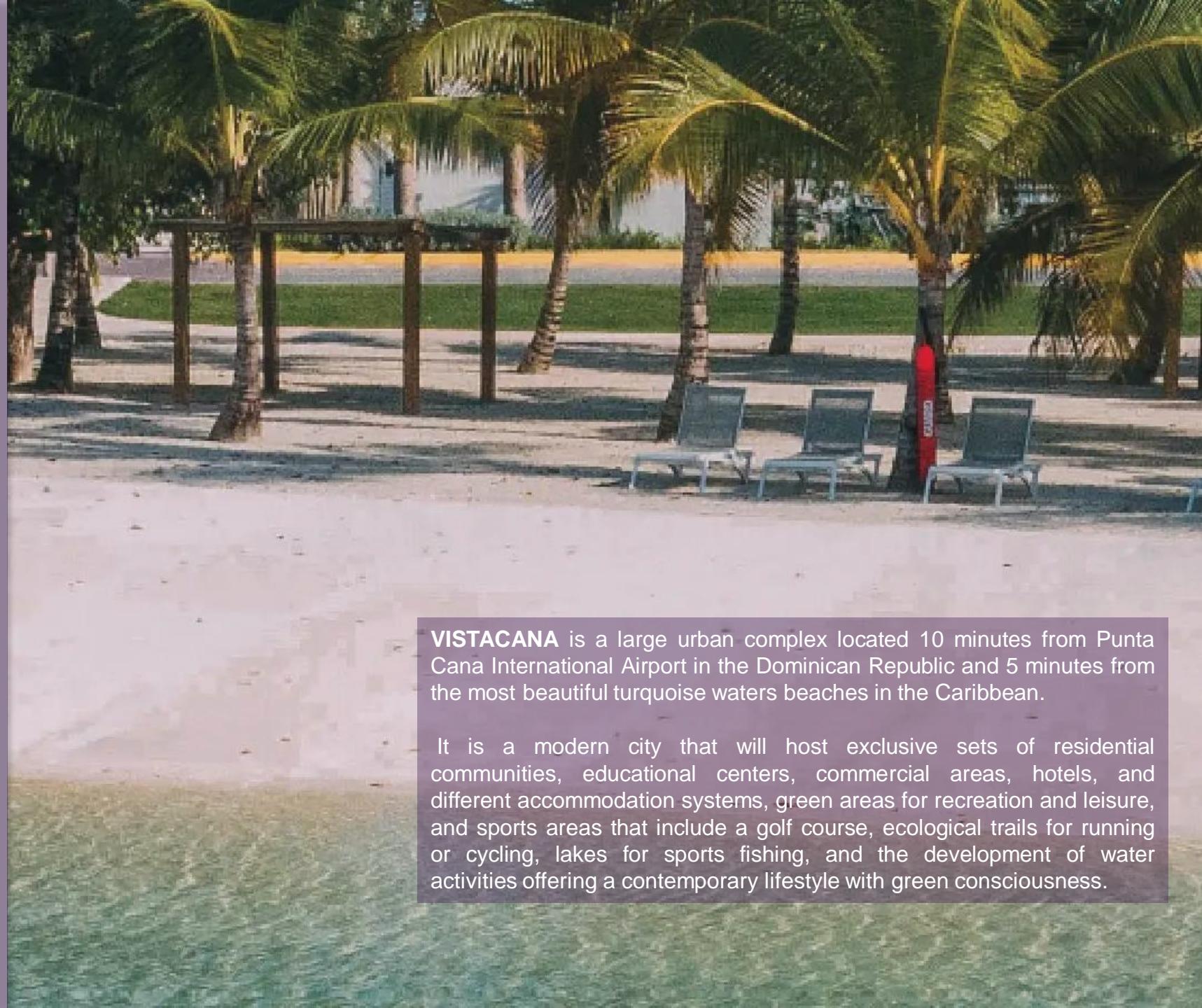
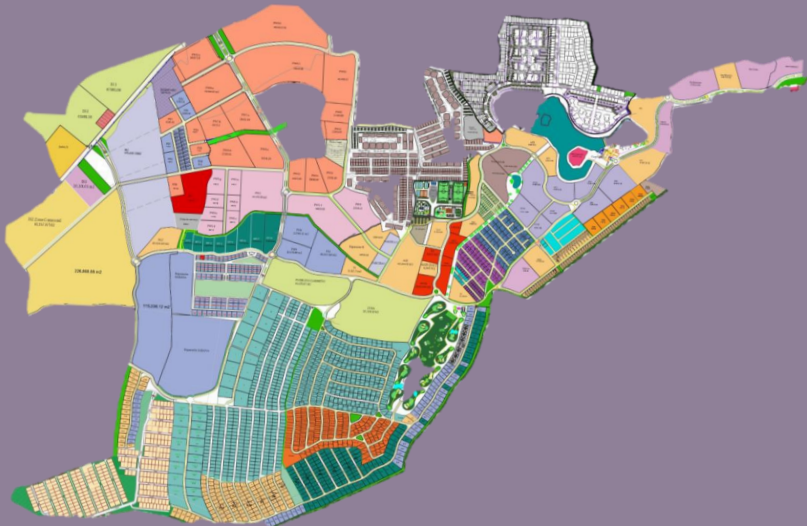
SPORTS CENTER





VISTACANA

A WORLD OF MOMENTS

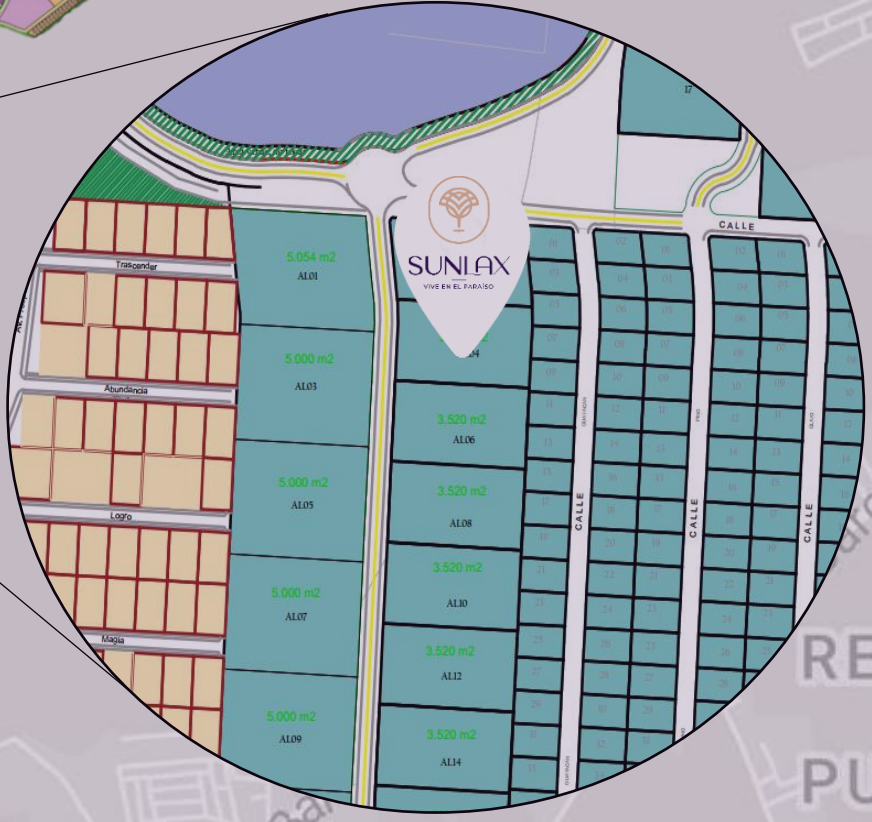


VISTACANA is a large urban complex located 10 minutes from Punta Cana International Airport in the Dominican Republic and 5 minutes from the most beautiful turquoise waters beaches in the Caribbean.

It is a modern city that will host exclusive sets of residential communities, educational centers, commercial areas, hotels, and different accommodation systems, green areas for recreation and leisure, and sports areas that include a golf course, ecological trails for running or cycling, lakes for sports fishing, and the development of water activities offering a contemporary lifestyle with green consciousness.

Amenities and nearby places It is located in the heart of the tourist area of Bávaro Punta Cana, just 10 minutes from Punta Cana International Airport and 10 minutes from the most beautiful beaches in the Caribbean, close to restaurants, shopping centers, with the tourist complex Down Town Punta Cana just a few meters away.





LOTIFICACIÓN
VERÓN II

RESIDENCIAL
BAVARO
PUNTA CANA

105

Show & Disco

Av. Barceló

Av. Barceló

CALLE

CALLE

CALLE



MASTER PLAN

The conceptual views and graphic representations of the project are a visual guide. The setting elements are for reference.

EXTERNAL VIEW



The conceptual views and graphic representations of the project are a visual guide. The setting elements are for reference.

THREE-BEDROOM VILLA



FIRST LEVEL

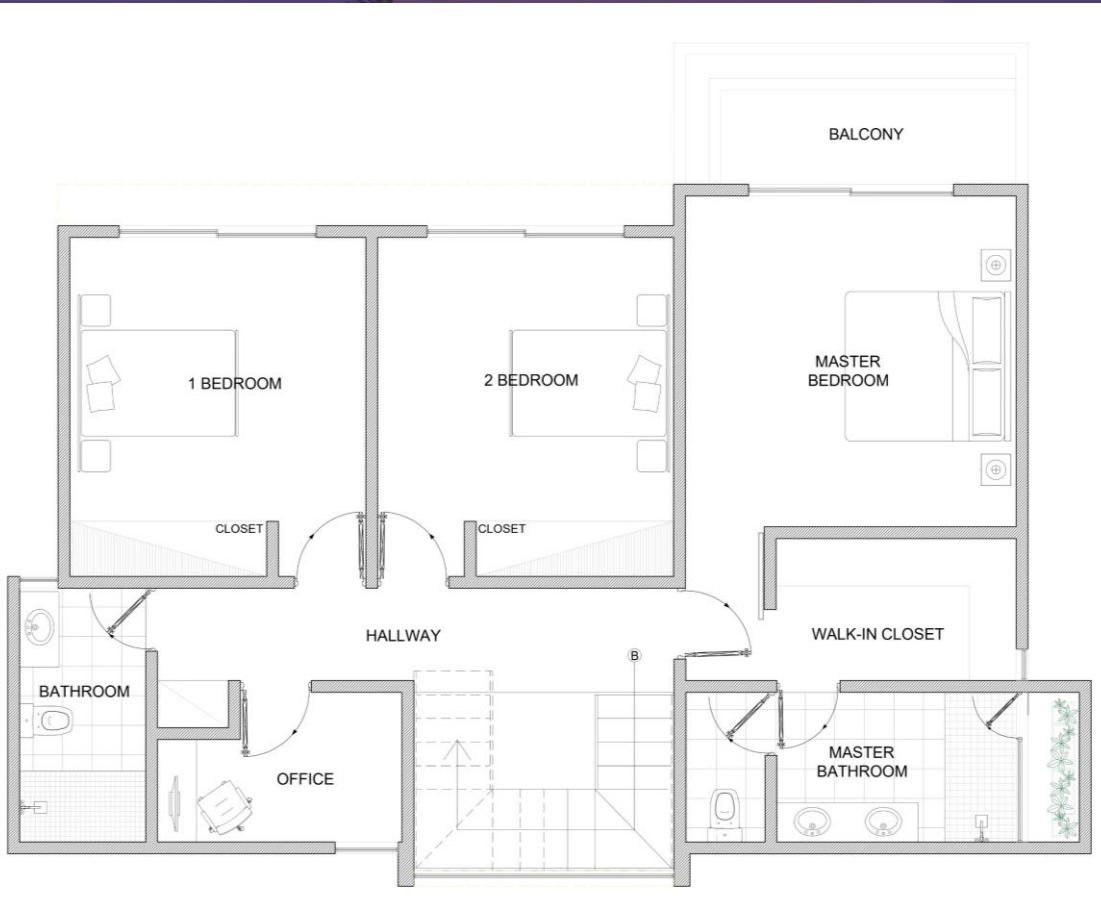
- Open Space Living-Dining-Kitchen
- Guest Bathroom
- Laundry
- Two Parking Spaces
- Terrace
- Patio

Pool not included



STARTING US\$360,000

THREE-BEDROOM VILLA



SECOND LEVEL

- Master Bedroom with Bathroom, walk-in closet, and Balcony
- Two Bedrooms with shared bathroom
- Office
- Linen closet



FOUR-BEDROOM VILLA



FIRST LEVEL

- Open Space Living-Dining-Kitchen
- Guest Bedroom with Bathroom, walk-in closet
- Guest Bathroom
- Laundry Area
- Double Height
- two Parking Spaces
- Terrace
- Patio

Pool not included



STARTING US\$445,000

FOUR-BEDROOM VILLA



SECOND LEVEL

- Master Bedroom with Bathroom, walk-in closet, and Balcony
- Two Bedrooms with shared bathroom and balcony
- Office
- Linen closet



FACADE



The conceptual views and graphic representations of the project are a visual guide. The setting elements are for reference.



LIVING ROOM

The conceptual views and graphic representations of the project are a visual guide. The setting elements are for reference.



SOCIAL AREA

The conceptual views and graphic representations of the project are a visual guide. The setting elements are for reference.

A modern bedroom interior featuring a bed with a wooden frame and a patterned headboard, a large window with sheer and heavy curtains, a TV on a wooden and white cabinet, and a round armchair. The room is lit with recessed ceiling lights and a bedside lamp. A purple banner with the word 'BEDROOM' is overlaid on the left side.

BEDROOM

The conceptual views and graphic representations of the project are a visual guide. The setting elements are for reference.



PATIO

Las vistas conceptuales y representaciones gráficas del proyecto son una guía visual. Los elementos de ambientación son de referencia.



TERRACE

The conceptual views and graphic representations of the project are a visual guide. The setting elements are for reference.

PAYMENT PLANS

01

6% Discount on the total property price

Reservation USD 5,000

80% upon signing the purchase promise agreement / 30 days

0% during construction

20% upon delivery

02

3% Discount on the total property price

Reservation USD 5,000

50% upon signing the purchase promise agreement / 30 days

30% during construction

20% upon delivery

03

Reservation USD 5,000

20% upon signing the purchase promise agreement / 30 days

60% during construction

20% upon delivery



SUNLAX

VIVE EN EL PARAÍSO



VISTACANA

A WORLD OF MOMENTS